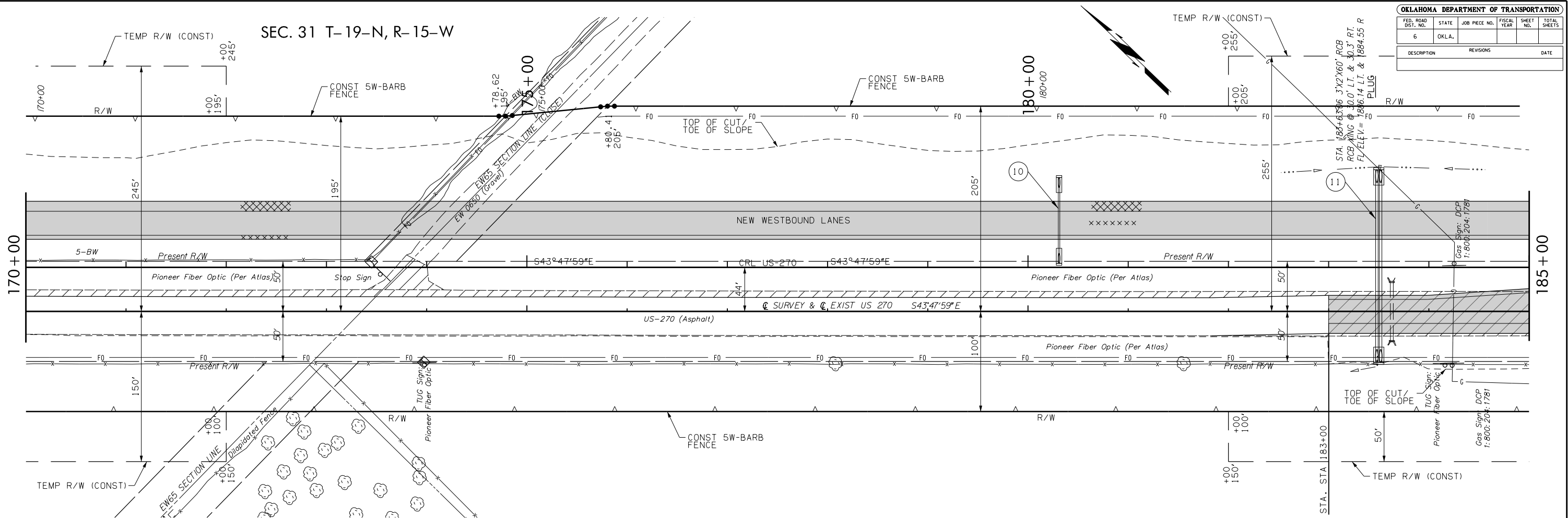
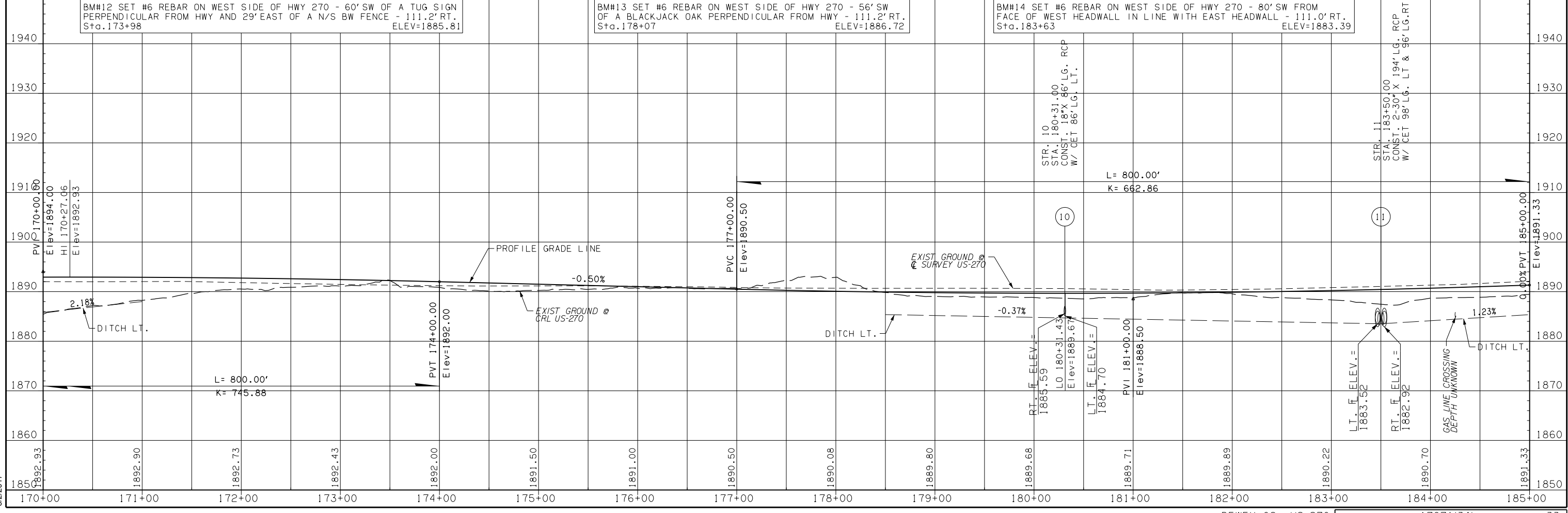


SEC. 31 T-19-N, R-15-W



SEC. 6 T-18-N, R-15-W



BM#12 SET #6 REBAR ON WEST SIDE OF HWY 270 - 60' SW OF A TUG SIGN PERPENDICULAR FROM HWY AND 29' EAST OF A N/S BW FENCE - 111.2' RT. Sta. 173+98 ELEV=1885.81

BM#13 SET #6 REBAR ON WEST SIDE OF HWY 270 - 56' SW OF A BLACKJACK OAK PERPENDICULAR FROM HWY - 111.2' RT. Sta. 178+07 ELEV=1886.72

BM#14 SET #6 REBAR ON WEST SIDE OF HWY 270 - 80' SW FROM FACE OF WEST HEADWALL IN LINE WITH EAST HEADWALL - 111.0' RT. Sta. 183+63 ELEV=1883.39

8/2/2017